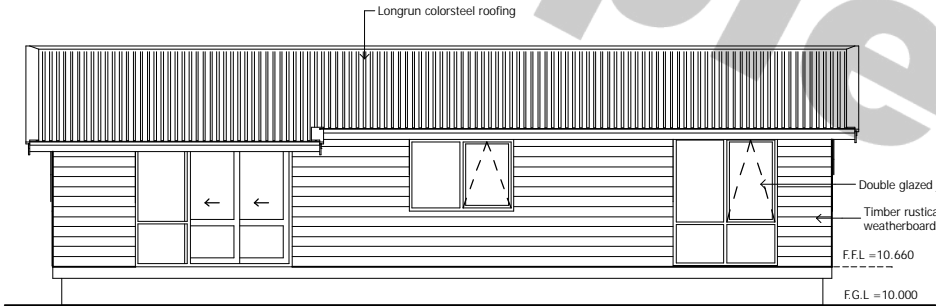
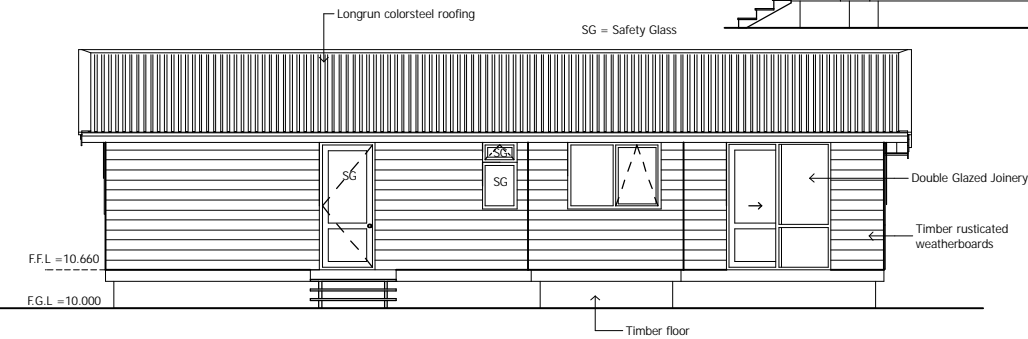
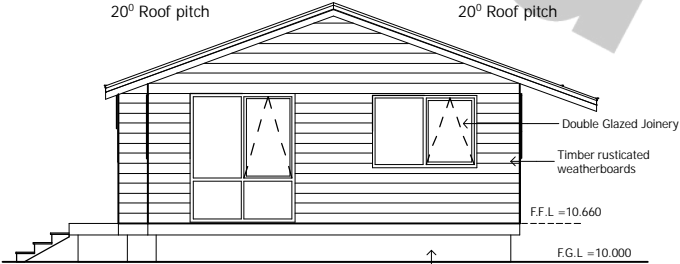


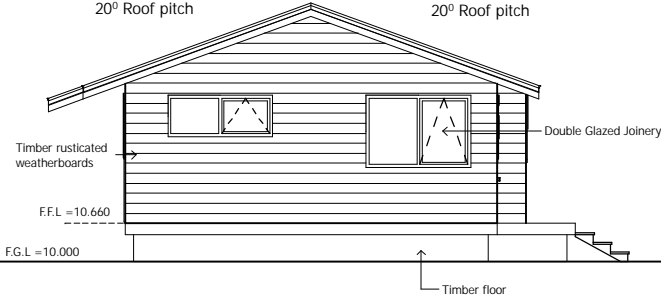
Floor Plan Area : 87.10m²



20° Roof pitch 20° Roof pitch



20° Roof pitch 20° Roof pitch





Evans Group Limited
5 Moewai Road
RD1 Whitianga 3591



evanshomes@xtra.co.nz

Phone: 07 866 5656

Fax : 07 866 5657



Transportable Homes

COMPLIANCE AND GUARANTEES

- Building permit issued for temporary site only
- Completed Code of Compliance
- Built design for very high wind zone
- LPB Drawings and specifications
- LPB Builder
- LPB Roofer
- Plumbing Certificate
- Electrical Certificate

EXTERIOR

- Subfloor bearers and pile connection
- Floor joists and T&G particle board H3 to wet areas
- Exterior weatherboards cladding, cut pine H3.2, bevel backed or rusticated
- Scribes to corner boxes, doors, and windows
- Gable trussed roof
- Endura colour steel roofing
- Colour steel guttering and PVC downpipes
- All windows double glazed
- Under floor Insulation
- Ceiling & exterior walls fully insulated

INTERIOR FINISHINGS AND DOORS

- All interior walls lined in T&G pine
- Scotia and architraves in pine
- Gib board ceilings, stopped to level 4
- Interior doors with satin chrome handles

PLUMBING FITTINGS

- Corner shower or wet floor shower
- Vanity with mirror
- Back to wall toilet with soft close seat
- Hot water cylinder (can be gas)
- Laundry tub

PAINTING

- Stained 4-sided exterior weather boards
- Interior solid timber walls stained (Blonded or natural)
- All doors painted

ELECTRICAL

- Interior switchboard with smart meter
- LED Down lights to bedrooms and exterior
- Pendant or spot lights to kitchen areas
- Double power points in bedrooms and living area
- Bathroom Combined 3 and 1 light/heat/extractor fan

KITCHEN

- Formica bench tops with S/S sink insert
- All cabinetry with soft close doors & drawers
- Splash back to rear wall of stove bench
- Satin chrome handles to all cupboards
- Smooth cook top
- Under bench oven
- May have S/S dishwasher and S/S Range hood, ducted to exterior

INTERIOR FURNISHINGS

- Thermal lined curtains to living and bedrooms
- Venetian Blind to kitchen
- Vinyl tiles to wet area and kitchen/living area (Heavy duty)
- Solution dyed nylon carpet and Underlay to hall and Bedrooms

HEATING

- Heat pump or fireplace

OWNERS OPTIONS

- Deck with built in table and seats
- Assist with application for site permits
- Site Geo Tech and storm water reports
- Onsite connections (sewer, storm water, power)
- House transportation

Note: Plans will vary depending on the build type, get in touch for specific information on any particular build

AFTER HOURS PLEASE CONTACT KEVIN EVANS 0274971183