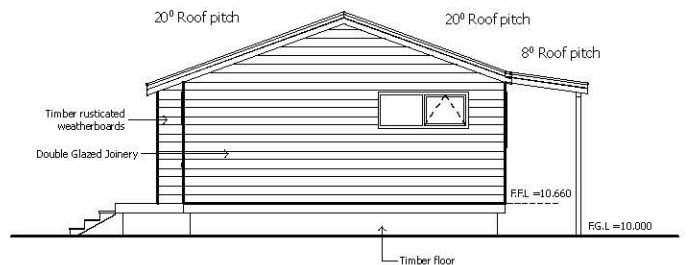
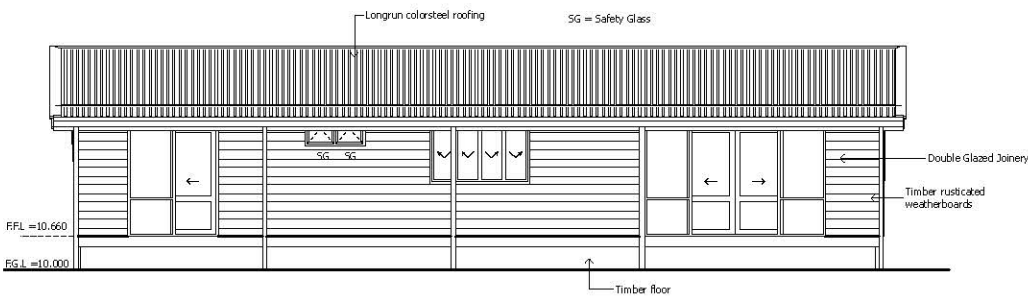
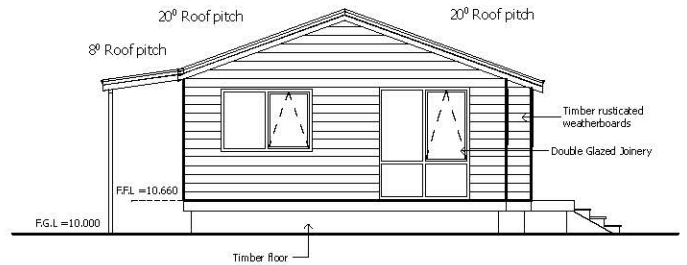
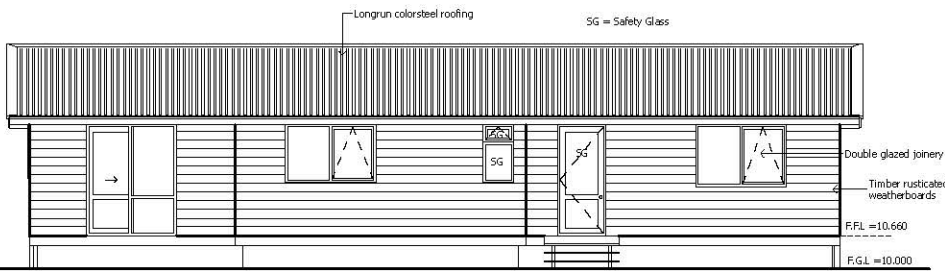
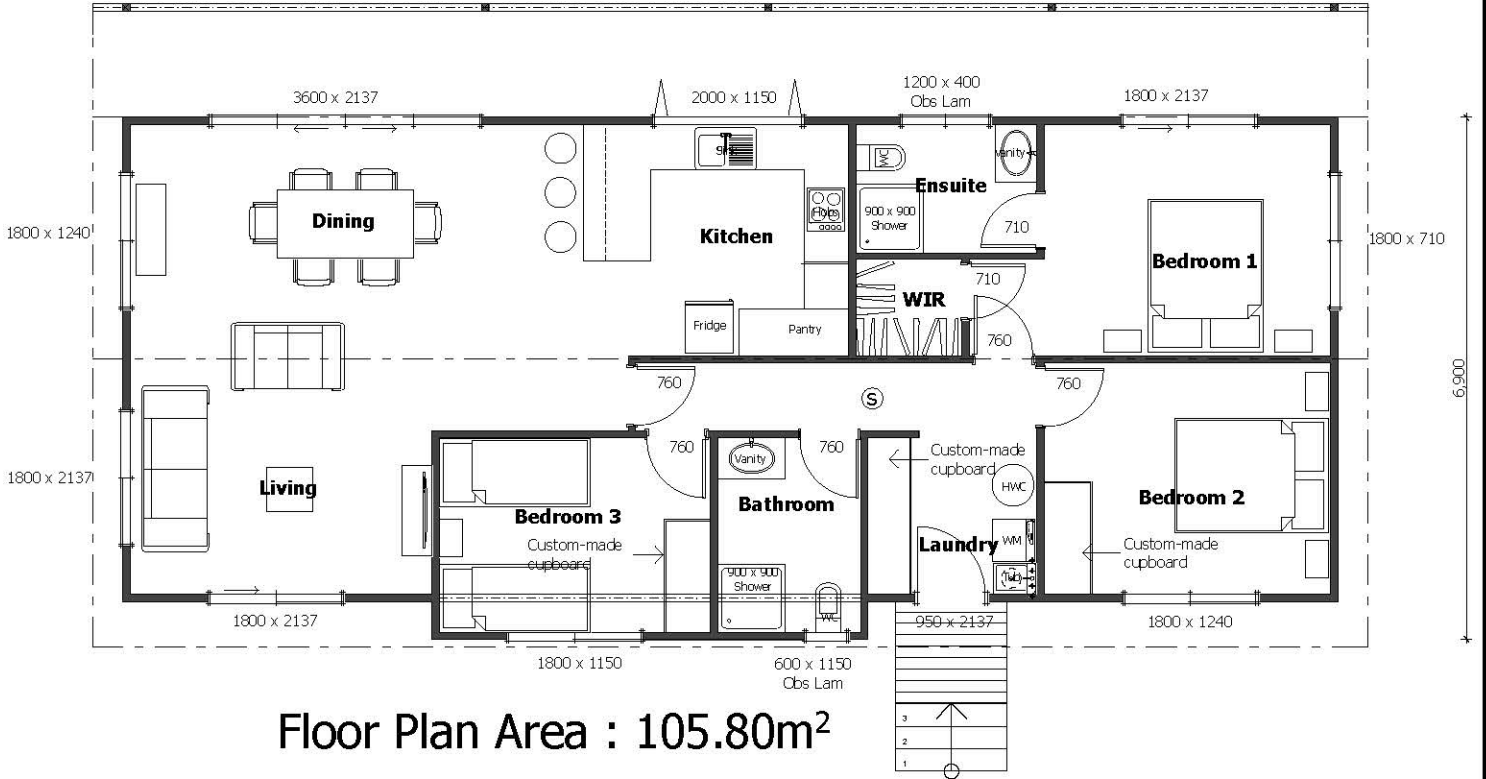


16,080



“IS THIS YOUR NEW HOME”

3 Bedroom with ensuite, designed and built to

Capture the early morning sun through to the
Late afternoon.

Three Bedroom with Ensuite and Veranda 105.80m² and 59m² of Decking

COMPLIANCE

- Building permit issued for temporary site only
- Built to very high wind zone
- LPB Builder

EXTERIOR

- Subfloor bearers and pile connection
- Floor joists and T&G particle board H3 to wet areas
- Exterior **Rusticated weatherboards pine H3.2**,
- Scribes to corner boxes, doors, and windows
- Gable trussed roof
- Endura colour steel roofing
- Colour steel guttering and PVC downpipes
- All windows **double glazed**
- Under floor Insulation Expol
- Ceiling & exterior walls fully insulated

INTERIOR FINISHINGS AND DOORS

- All interior walls lined in **T&G pine**
- Scotia and architraves in pine
- Gib board ceilings, stopped to level 4
- Interior doors with satin chrome handles

PLUMBING FITTINGS

- Two** Showers .900x900mm
- Vanities with mirrors
- Back to wall** toilets
- 180Ltr** Hot water cylinder
- Laundry tub

PAINTING

- Paint 4-sided exterior weather boards
- Interior solid timber walls stained (**Blonded**)
- All doors painted with satin chrome handles

ELECTRICAL

- Interior switchboard with smart meter
- LED** Down lights to bedrooms and exterior
- Double** power points in bedrooms and living area
- Bathroom Combined 3 and 1 light/heat/extractor fan
- Heated towel rail ladder chrome
- Heat pump** to living

KITCHEN

- Formica bench tops with S/S **double** sink insert
- All cabinetry with soft close doors & drawers
- Splash back to rear wall of stove bench
- F&P Cook top 4 element **ceramic glass**
- F&P SS Under bench fan oven
- F&P SS **Dishwasher**
- 900W Range** hood ducted to exterior SS

INTERIOR FURNISHINGS

- Curtains** and venetian blind
- Vinyl planks to wet area
- Solution dyed nylon **carpet**

OWNERS OBLIGATIONS

- Application for site permits
- Site Geo Tech and storm water reports
- Onsite connections (sewer, storm water, power)
- House transportation and foundations

AFTER HOURS PLEASE CONTACT KEVIN EVANS 0274971183

